

# Herman Lyon's Mausoleum, Calton Hill, Edinburgh

## Historic Building Survey

### Report

AOC 22509

31<sup>st</sup> October 2013



ARCHAEOLOGY

HERITAGE

CONSERVATION

## Herman Lyon's Mausoleum & Watching Brief, Calton Hill, Edinburgh

### Historic Building Survey Report

---

<b>On Behalf of:</b>	City of Edinburgh Council (Property Services) Waverley Court Level G5 19 New Street Edinburgh EH8 8BH
<b>National Grid Reference (NGR):</b>	NT 26184 74210
<b>AOC Project No:</b>	22509
<b>OASIS Ref No:</b>	158158
<b>Prepared by:</b>	Diana Sproat Gemma Hudson
<b>Date of Fieldwork:</b>	27 <sup>th</sup> August 2013
<b>Date of Report:</b>	31 <sup>st</sup> October 2013

This document has been prepared in accordance with AOC standard operating procedures.

**Author:** Diana Sproat / Gemma Hudson

**Date:** 31<sup>st</sup> October 2013

**Approved by:** Martin Cook

**Date:** 31<sup>st</sup> October 2013

**Draft/Final Report Stage:** Draft

**Date:** 31<sup>st</sup> October 2013

## Contents

	Page
List of Figures .....	4
List of Plates .....	4
List of Appendices .....	4
SUMMARY .....	5
<b>1 INTRODUCTION .....</b>	<b>6</b>
1.1 Project background.....	6
1.2 Site Location .....	6
<b>2 OBJECTIVES .....</b>	<b>6</b>
<b>3 METHODOLOGY .....</b>	<b>6</b>
3.1 Archive Research .....	6
3.2 Written and Photographic Survey .....	6
3.3 Measured Survey .....	6
3.4 Archiving.....	7
<b>4 HISTORICAL BACKGROUND.....</b>	<b>7</b>
<b>5 ARCHITECTURAL ASSESSMENT.....</b>	<b>9</b>
<b>6 DISCUSSION.....</b>	<b>9</b>
<b>7 CONCLUSIONS &amp; RECOMMENDATIONS .....</b>	<b>9</b>
<b>8 REFERENCES .....</b>	<b>10</b>
8.1 Bibliography and bibliographical references .....	10
8.2 Cartographic References.....	10
<b>Appendix 1: Photographic Register.....</b>	<b>11</b>
<b>Appendix 2: Discovery &amp; Excavation in Scotland (DES) Entry .....</b>	<b>12</b>

### List of Figures

- Figure 1: Site location plan
- Figure 2: Extract from Kirkwood's map, 1817
- Figure 3: Extract from Ordnance Survey map, 1852
- Figure 4: Herman Lyon's Mausoleum, site plan, topographic plan and sections through the mausoleum
- Figure 5: Herman Lyon's Mausoleum, north-facing and south-facing sections through the mausoleum
- Figure 6: Herman Lyon's Mausoleum, east-facing and west-facing sections through the mausoleum
- Figure 7: Herman Lyon's Mausoleum, ortho-image of mausoleum point-cloud from the east
- Figure 8: Herman Lyon's Mausoleum, ortho-image of mausoleum point-cloud from the west
- Figure 9: Herman Lyon's Mausoleum, ortho-image of mausoleum point-cloud from the south
- Figure 10: Herman Lyon's Mausoleum, ortho-image of mausoleum point-cloud from above
- Figure 11: Herman Lyon's Mausoleum, ortho-image of mausoleum point-cloud from the north-east
- Figure 12: Herman Lyon's Mausoleum, ortho-image of mausoleum point-cloud from the NWW

### List of Plates

- Plate 1: Main chamber, general view of the west wall showing the inner skin wall, from the SEE
- Plate 2: Main chamber, general view of the east wall from the west
- Plate 3: Main Chamber, general view of the south wall from the north-west
- Plate 4: Main Chamber, general view of the north inner skin wall showing the main former gated entrance, from the south-west
- Plate 5: Entrance Passage, detail of the former gated entrance, from the north
- Plate 6: Former gated entrance, detail of rusted hinge in the east side, from the north-east
- Plate 7: Former gated entrance, detail of rusted fitting in the west side, from the north-west
- Plate 8: Former gated entrance, detail of rusted iron latch, from the south-east
- Plate 9: Entrance Passage, general view from the north
- Plate 10: Entrance Passage, general view from the south
- Plate 11: Entrance Passage, detail of blocked entrance from the south

### List of Appendices

- Appendix 1: Photographic register
- Appendix 2: Discovery & Excavation in Scotland (DES) Entry

## SUMMARY

*An historic building survey was undertaken of the former Herman Lyon's Mausoleum located on Calton Hill, Edinburgh, prior to its intended concealment after drainage works on the site. The Mausoleum, which dates from ca. 1795, is thought to be the first Jewish mausoleum/grave site in Edinburgh created by Herman Lyon. It does not appear on any maps apart from Kirkwood's 1817 map and the First Edition Ordnance Survey map of the 1850s and, although its existence was known, it has remained covered and generally forgotten about for the last 150 years.*

*This survey has identified the main character, shape and full extent of the chamber, complete with barrel-vaulted roof, and has placed it within a wider topographic survey of this area of Calton Hill. The floor of the main chamber was covered in a deposit of modern hardcore presumably dumped there during the construction of the adjacent tar mac road.*

## 1 INTRODUCTION

### 1.1 Project background

1.1.1 AOC Archaeology Group was commissioned by the City of Edinburgh Council to undertake an historic building survey of the former Herman Lyon's Mausoleum, the exact position of which was re-discovered during drainage works to update the drainage system on Calton Hill, Edinburgh. The works included a detailed survey of the mausoleum prior to its concealment as part of these drainage works.

### 1.2 Site Location

1.2.1 Herman Lyon's Mausoleum is located to the north-west side of Calton Hill and is centred on NGR: NT 26184 74210 (Figure 1). It is located adjacent to the tar mac road circling the main buildings on the hill, at the top of a steep slope on this side. Access to the mausoleum is presently through a small hole located over the top of the main chamber. The original entrance to the north of this is currently blocked off.

## 2 OBJECTIVES

2.1 The overall objective of this survey was to create a 'preservation by record' of the mausoleum prior to it being covered over through written, photographic and drawn record. Additionally, the opportunity has been taken, through archive research, to identify a basic history of the mausoleum to place this record in context.

## 3 METHODOLOGY

### 3.1 Archive Research

3.1.1 A map-regression exercise was undertaken using all available publicly accessible maps (Figures 2 & 3). Background history of the creation of the mausoleum were scant, although some online sources have been pulled together (see references section); no archives in relation to Herman Lyon specifically or the creation of his burial vault could be identified in the National Archives of Scotland.

### 3.2 Written and Photographic Survey

3.2.1 A written record of the mausoleum was undertaken in the form of notes commenting on the condition, construction, materials, architectural character of the chamber and anything else pertinent to the historical record. This was supplemented by a general and detailed photographic record of the chamber in black and white print and colour digital using a 35mm SLR and digital SLR respectively. A 1m ranging pole was used for scale where access and health and safety allowed, with an additional 30cm scale used for detail shots. A register of all photographs taken can be found in Appendix 1, and a selection of digital shots have been used as Plates for this report.

### 3.3 Measured Survey

3.3.1 A topographic and contour survey of the immediate site around the mausoleum within a 500m radius was completed using a 3D laser scanner and a trimble total station.

3.3.2 A more detailed survey of the chamber was made using a 3D laser scanner, which has produced a very versatile site record capable of producing detailed plans and sections at any point. This report

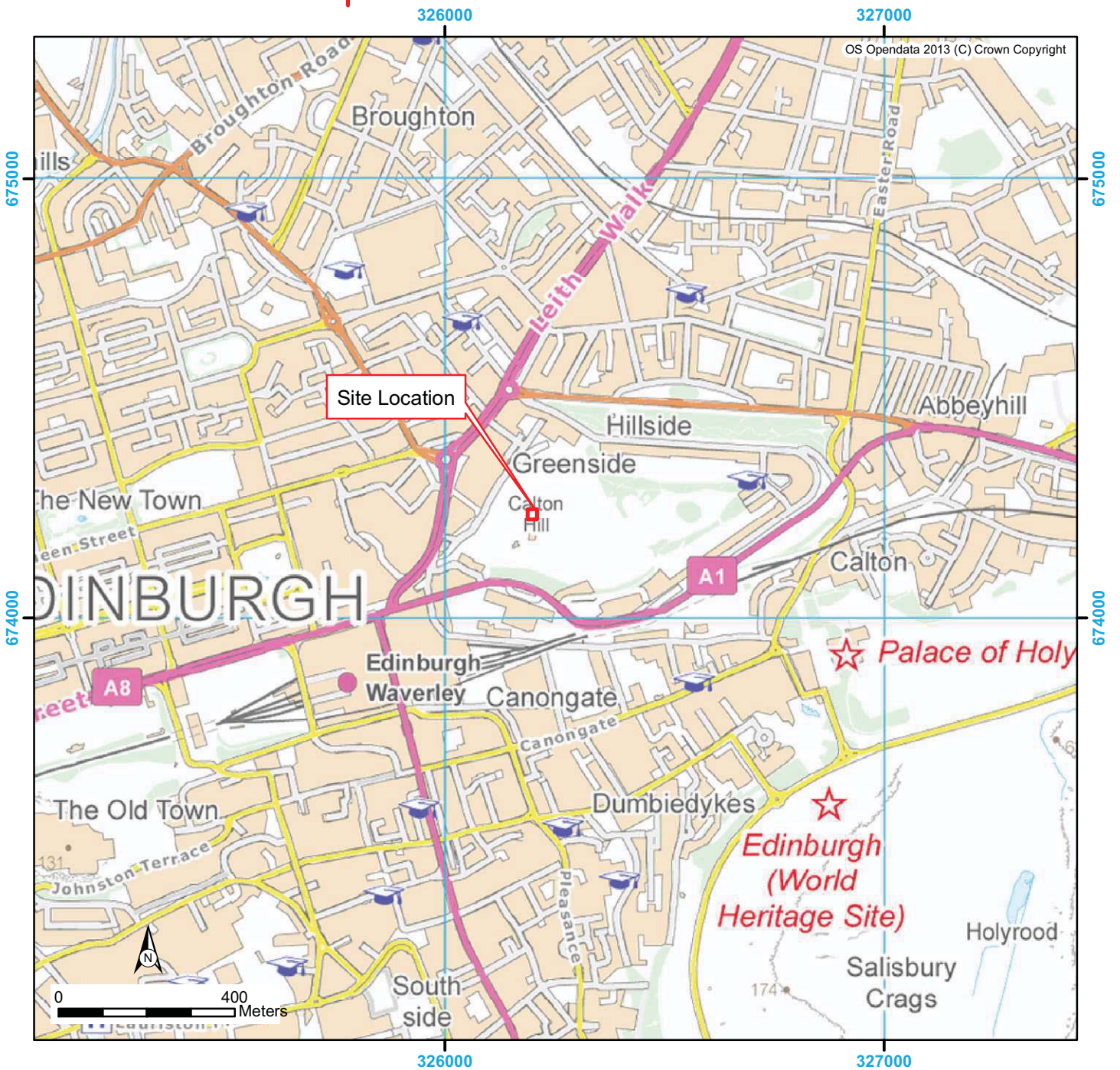
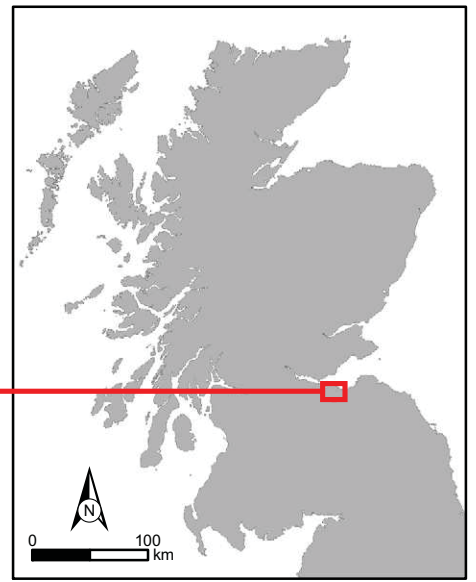
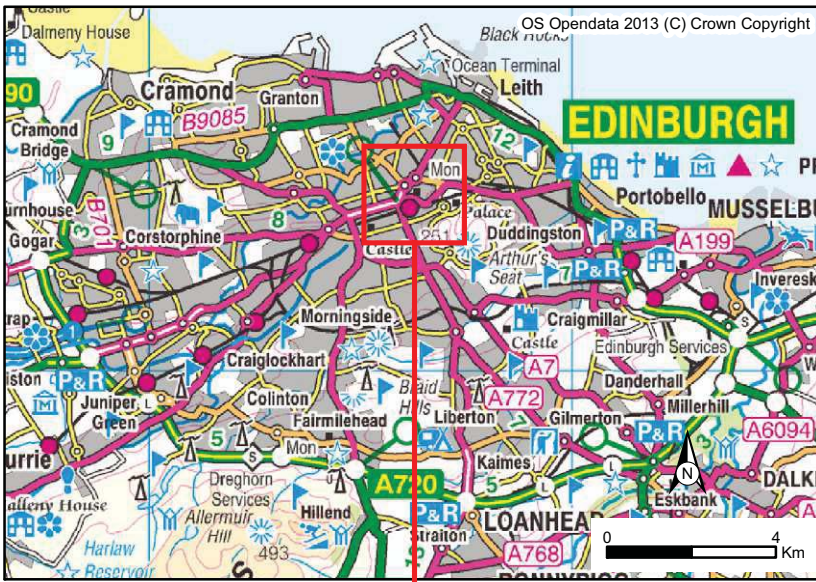


Figure 1: Site location map

has produced a detailed site plan of the mausoleum in addition to sections through it (Figures 4 - 6).

### 3.4 Archiving

- 3.4.1 The project has been recorded in the Online Access to the Index of Archaeological Investigations (OASIS) site (Ref: 158158). An entry has also been submitted to Discovery and Excavation in Scotland (DES) publication for inclusion in the forthcoming 2013 volume (see Appendix 2). A CD of the original photographs, together with a hard copy and a pdf digital version on CD of the report and jpgs, as well as the digital CAD files, has also been submitted to the National Archives of Scotland held at the RCAHMS building at Salisbury Place, Edinburgh and also to the local HER. For all archiving queries, please contact admin@aocarchaeology.com.

## 4 HISTORICAL BACKGROUND

- 4.1 Herman Lyon's Mausoleum was constructed in the late 18<sup>th</sup> century. Herman Lyon came to Edinburgh in 1788 from Prussia and was a dentist and chiropodist who lived on the Canongate (Edinburgh Jewish History ud). He is said to have petitioned the City of Edinburgh Council in 1795 for a place on Calton Hill for a burial plot on Calton Hill and obtained it for £17 (*ibid*). This may have been because prior to the creation of the Jewish cemetery in 1816 at Braid's Close, there was no dedicated Jewish cemetery in the city. On 6<sup>th</sup> May 1795, the Council Minutes record:

*'Approved of Report from a sub-committee named by the Magistrates, old Magistrates and Convener, to whom was remitted a Petition from Herman Lion, Dentist in Edinburgh, which Petition and report are of the following tenor: Unto the Right Hon. The Lord Provost Magistrates and Town Council of the City of Edinburgh . . . Humbly sheweth That your petitioner has for many years been an inhabitant of this City, and he hopes has conducted himself in an orderly and peaceable manner. As he has been educated and brought up in Religious Tenets different from the established Religion of this country which on occasion of the death of himself or any of his family might prevent their remains from being interred in any of the consecrated burying grounds belonging to the City, he is most anxious to purchase a small spot of ground, which he will inclose for a burying place for himself and family either on the lands of Calton Hill or Bruntsfield links, as may be pointed out by your Honour's Overseer of Works . . . Having inspected the ground on the north side of the Observatory Are of opinion that there is a spot near the north-west corner of the surrounding wall that might answer for a burying ground. This spot is very retired and out of the way and might be inclosed with a stone wall at Mr. Lions expence. The area when inclosed may be fourteen by eleven feet over walls...Which having been considered by the Magistrates and Council they agreed to convey the ground mentioned in the foregoing report for the purpose solely of a burying place for the Petitioner and his relations upon his paying to the Chamberlain seventeen pounds sterling, and his getting the consent of the tacksman of the lands of the Calton Hill'. (as reproduced in Levy 1959).*

- 4.2 As any graves or markers were concealed at the time of survey, it is unknown who was interred there, although it is thought to be Herman himself and his wife.
- 4.3 The grave only appears on the historic mapping evidence twice. It first appears on Kirkwood's Plan of the City of Edinburgh dating to 1817 (Figure 2). It is simply annotated 'Burying Place of the Jews' and not mentioning Herman Lyon by name. The mausoleum also appears in the First Edition Ordnance Survey map of 1852 (Figure 3). Here, it is annotated as 'Jews Burial Vault (Lyons Family)'.

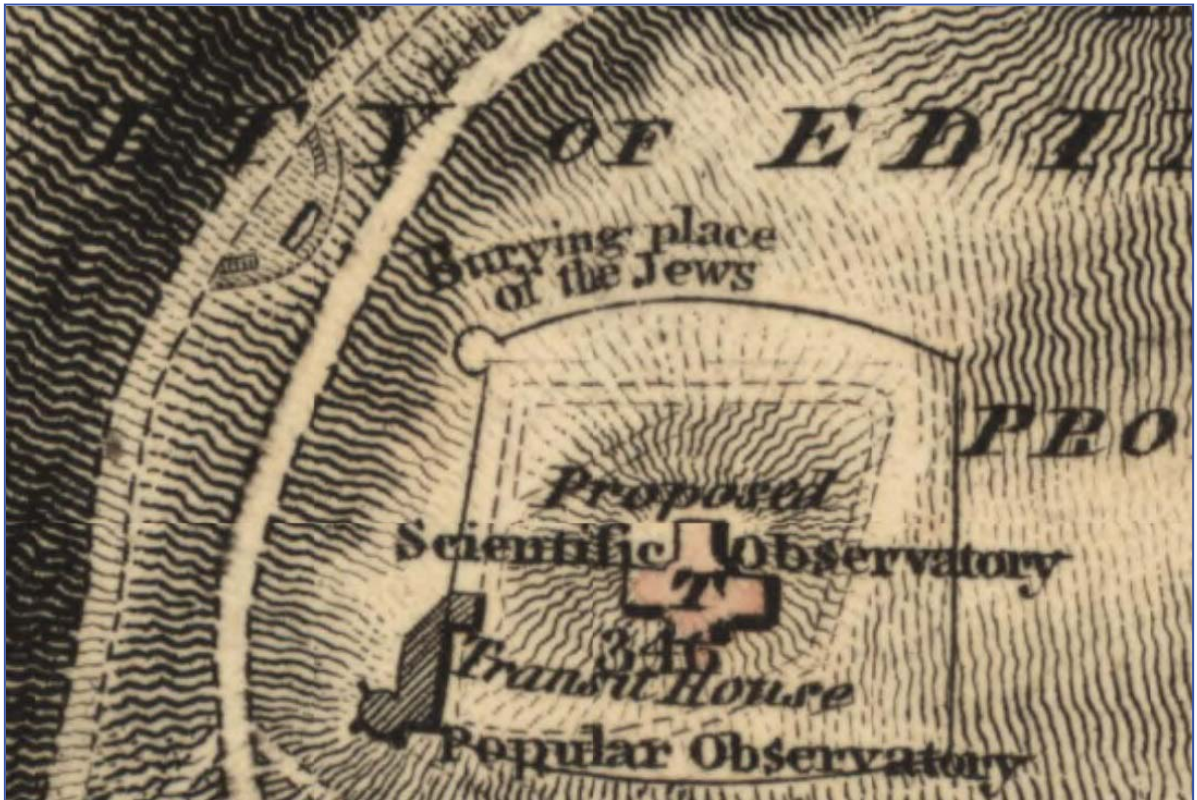


Figure 2: Extract from Kirkwood's map, 1817

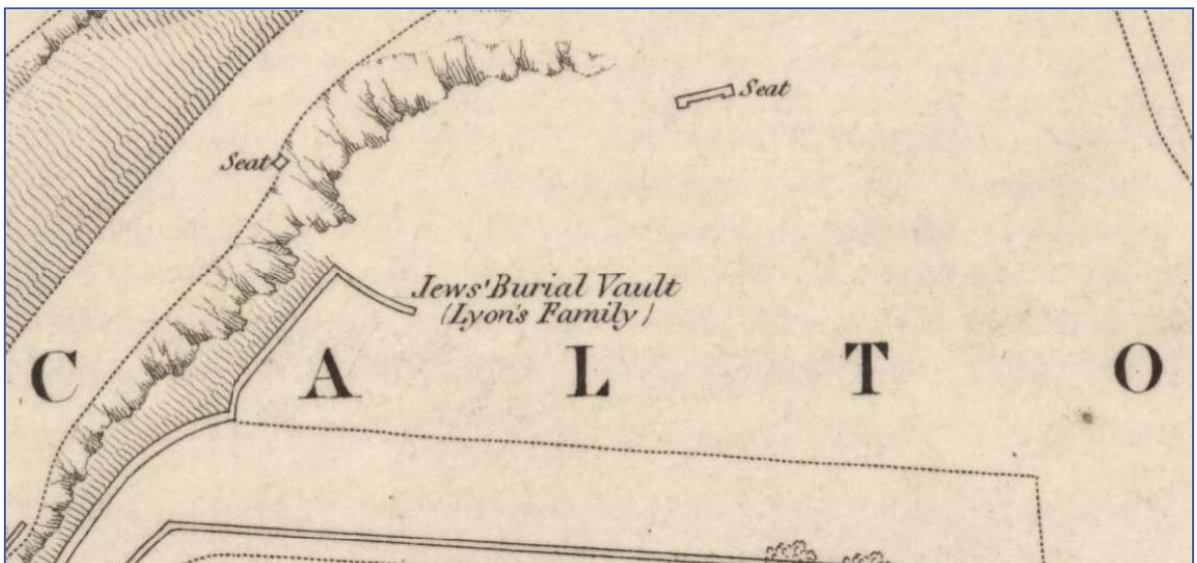


Figure 3: Extract from Ordnance Survey map, 1852

## 5 ARCHITECTURAL ASSESSMENT

- 5.1 The vault itself consists of two chambers. The main chamber is located to the south and is presently accessed through a hole in the barrel-vaulted roof, with a smaller thin passage leading up to the main entrance to the north side (Figure 4).
- 5.2 The main chamber consists of stone rubble build measuring 4.79m x 3.62m with an inner wall inside it on the north, east and west sides only (abutting the south wall), 0.30m from the main wall and 0.30m in width (Plates 1 – 3). The inner wall is capped and is higher on the south side, sloping down to the north. On the north side of the inner wall is a small entranceway with dressed stone lintel leading to the main entrance passage (Plates 4 & 5). It once had a security gate attached to it, although now only the rusted hinges and fittings survive, with a detached cross-bar/latch resting on the lintel (Plates 6 - 8).
- 5.3 The entrance chamber is thinner, 1.75m in width and presently about 3.5m in height (maximum), although of course the ground level in the entirety of the mausoleum has been substantially raised by the dumping of modern hardcore associated with the construction of the adjacent tar mac road above (Plates 9 - 11). It has a supporting arch with voussoirs near the entrance before the small main entrance which is largely blocked with stones and a row of timber planks (possibly railway sleepers) resting over it.

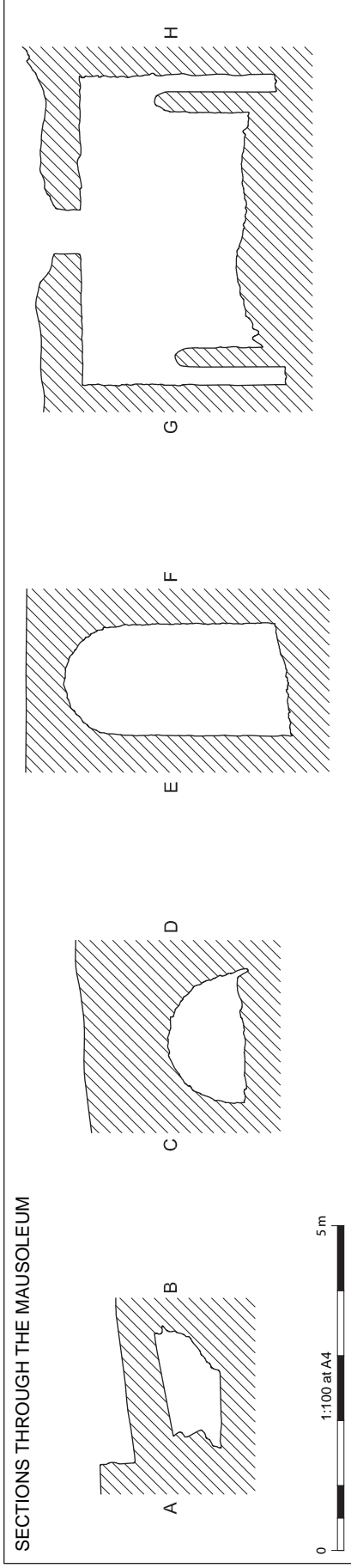
## 6 DISCUSSION

- 6.1 This small mausoleum dates to the late 18<sup>th</sup> century/early 19<sup>th</sup> century and unfortunately an exact date for its construction is unknown, although is presumed to have been started soon after Herman Lyon was granted permission to construct it in 1795. The contents of the chamber have been compromised by the dump of hardcore within it, which has concealed any evidence of the graves of Herman and (presumably) his wife. Any further investigations into the nature of the grave markers would require the removal of this material.

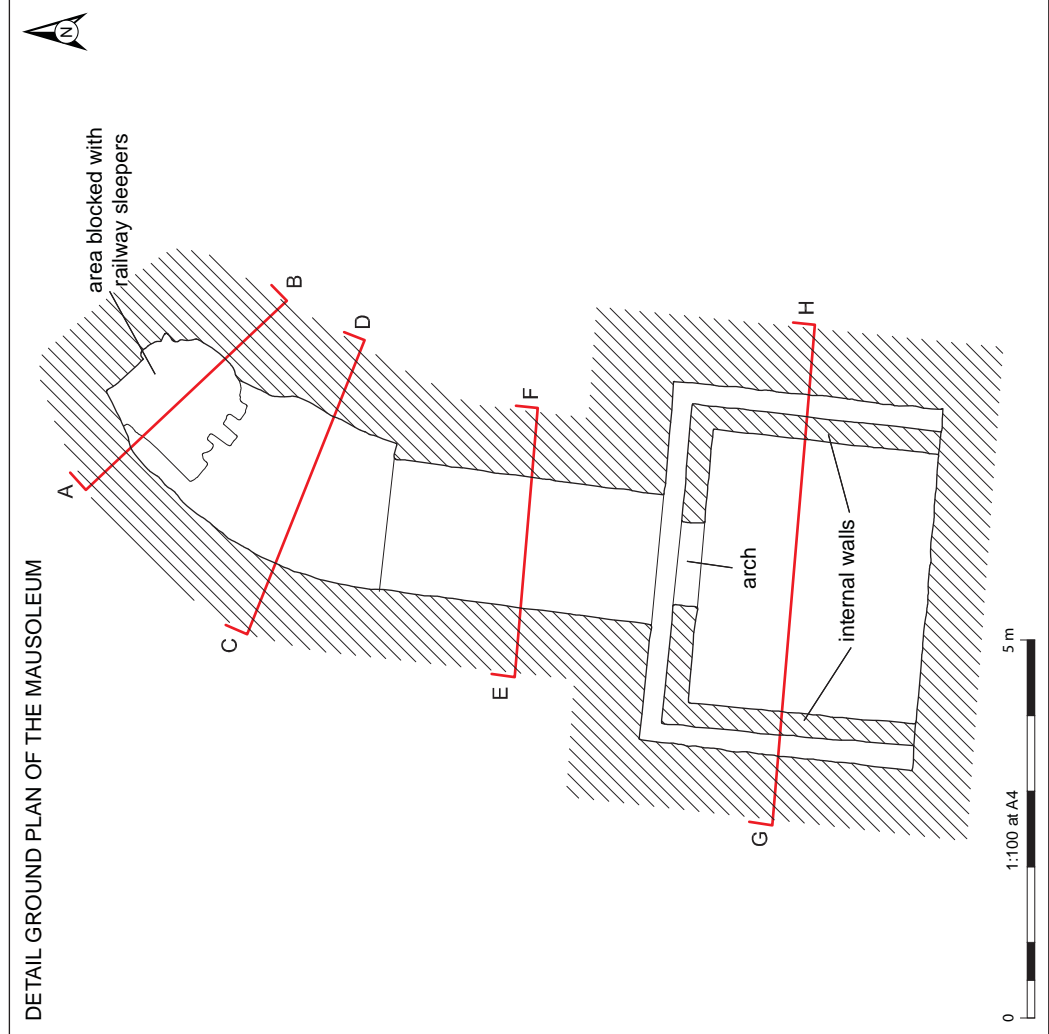
## 7 CONCLUSIONS & RECOMMENDATIONS

- 7.1 This report has successfully recorded Herman Lyon's Mausoleum in its present state, after which it is presumed the chambers will be sealed off. Any further investigations on the mausoleum would require the removal of the hardcore within it (which would be a monumental task) and would only be recommended if the site were to be removed or demolished. The site does not presently have any statutory designations, although this would not preclude it from a requirement for recording in such circumstances.
- 7.2 It has been recommended that any further works which would affect any aspect of the mausoleum be subject to an archaeological watching brief to record what is exposed prior to removal or concealment. The results of any watching brief should be added to this report to provide a complete and final report on the findings.

SECTIONS THROUGH THE MAUSOLEUM



DETAIL GROUND PLAN OF THE MAUSOLEUM



SITE PLAN

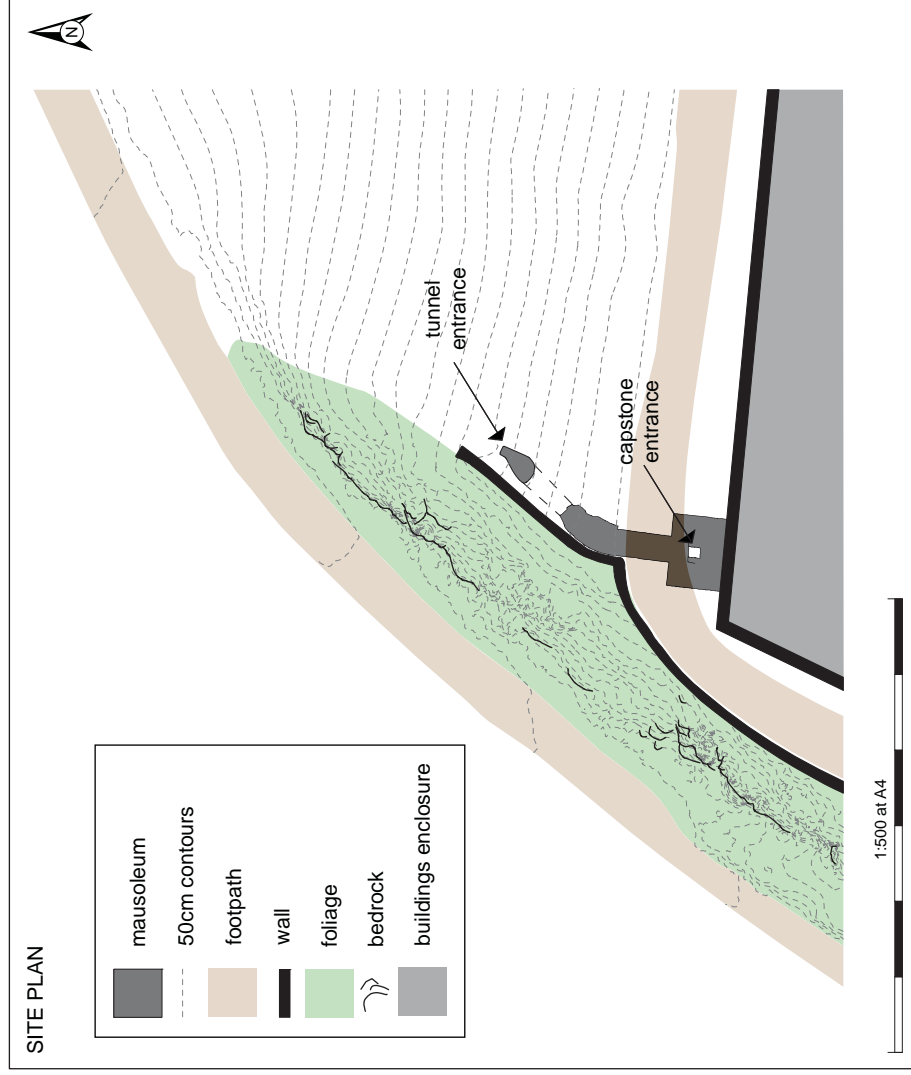
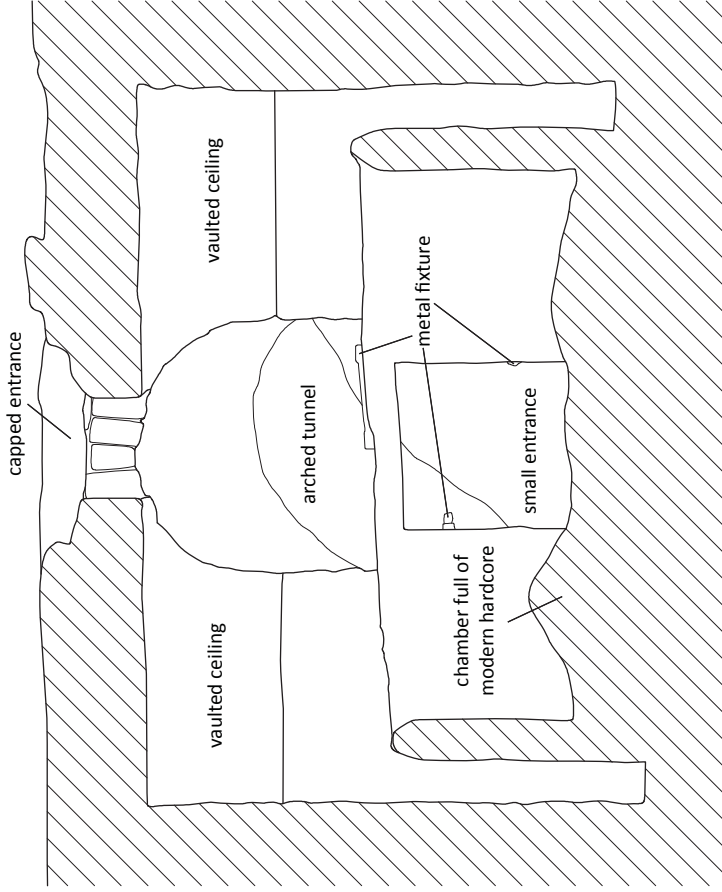
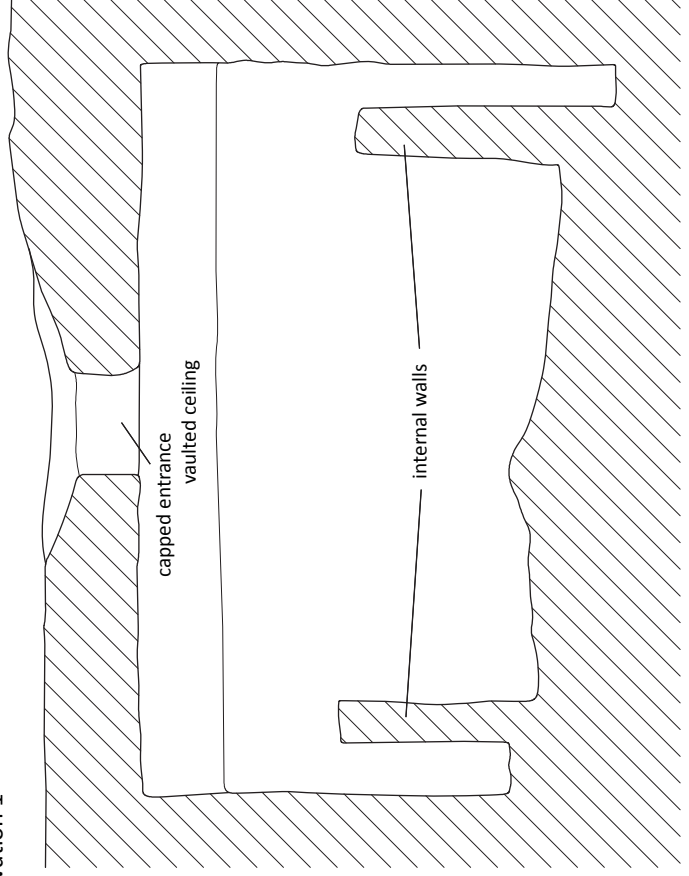


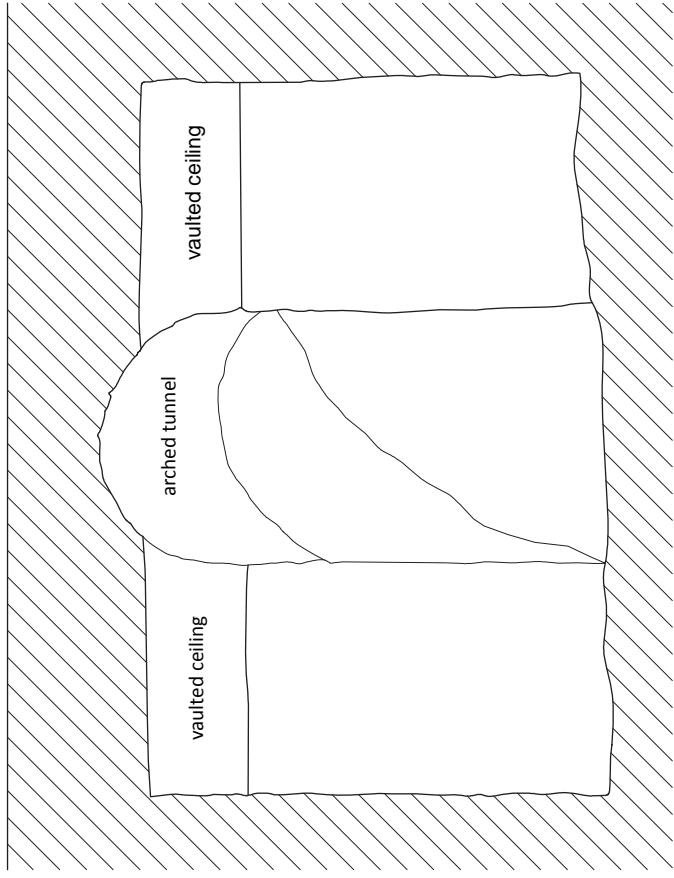
Figure 4: Herman Lyon's Mausoleum, topographic plan, site plan and sections



South-facing Elevation 1



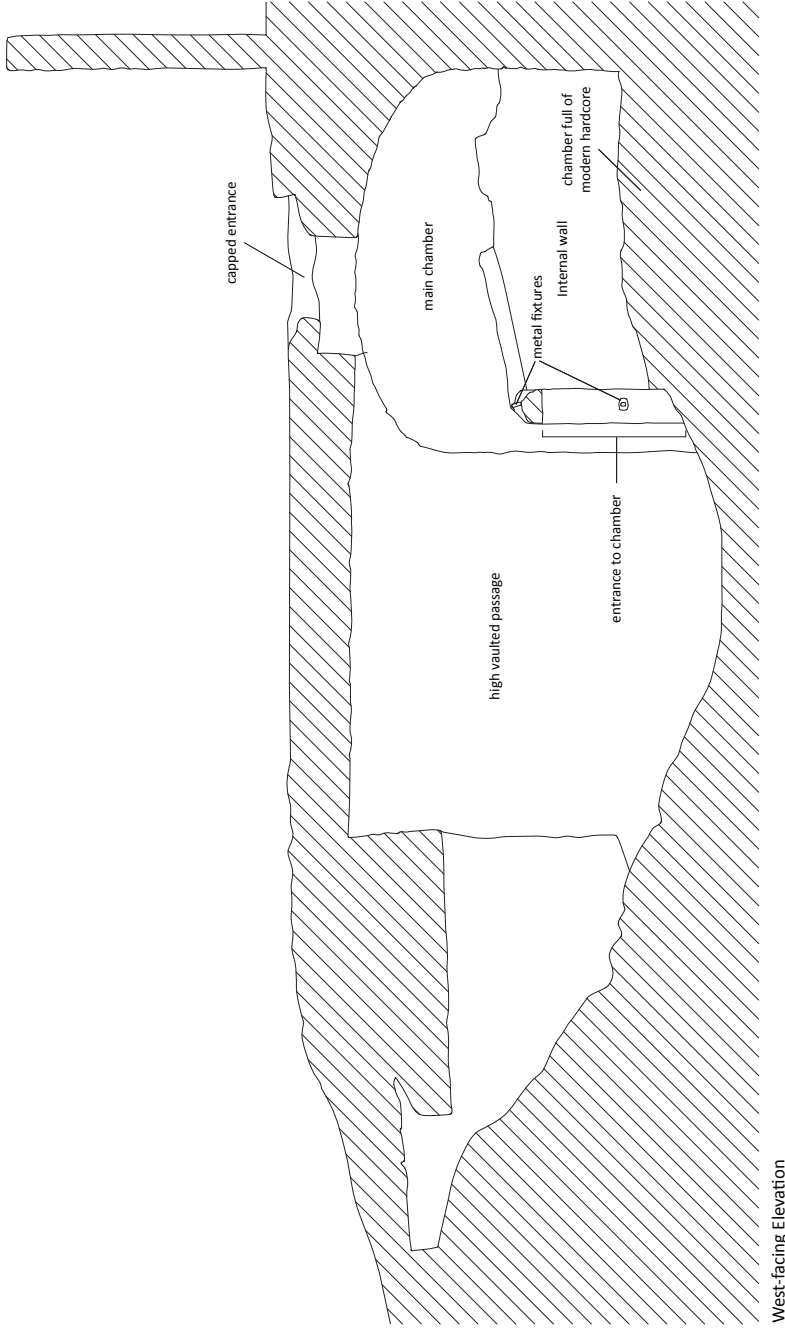
North-facing Elevation



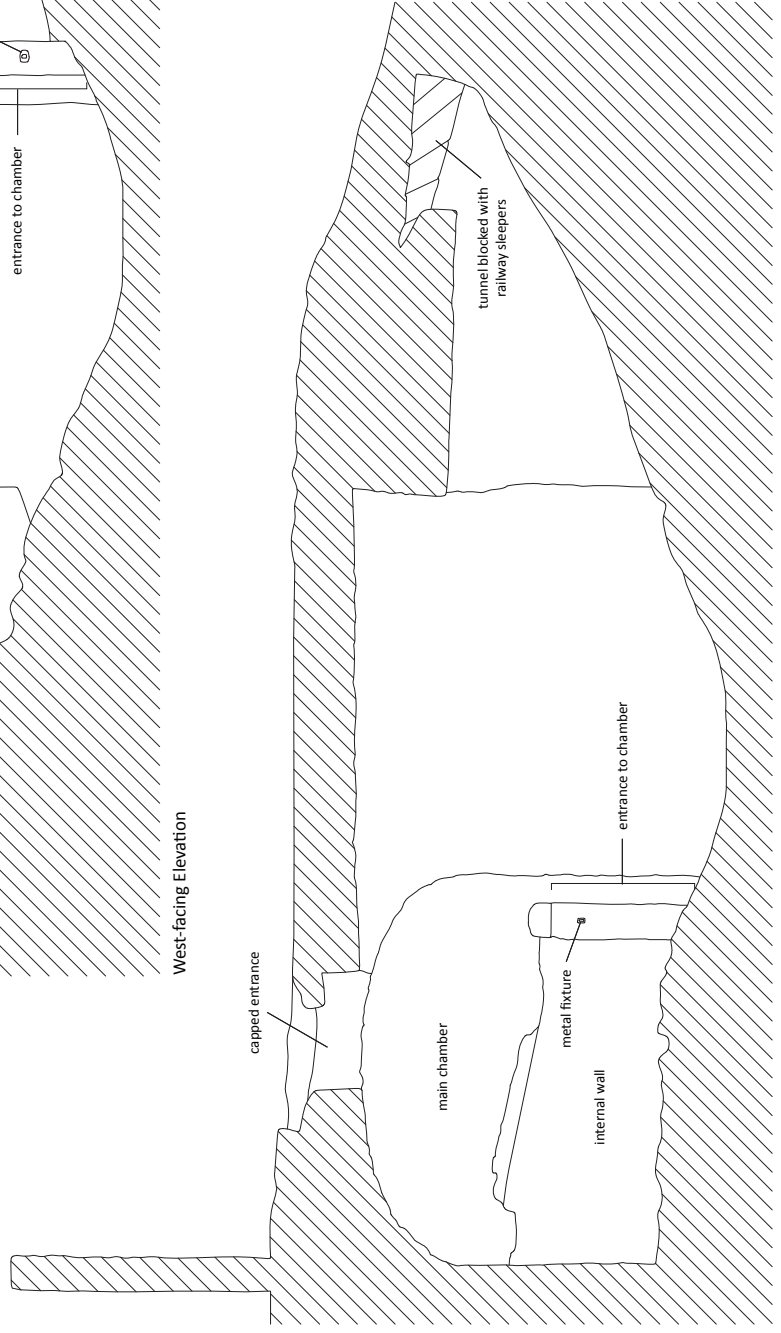
South-facing Elevation 2



Figure 5: Herman Lyon's Mausoleum, north-facing and south-facing sections



West-facing Elevation



East-facing Elevation

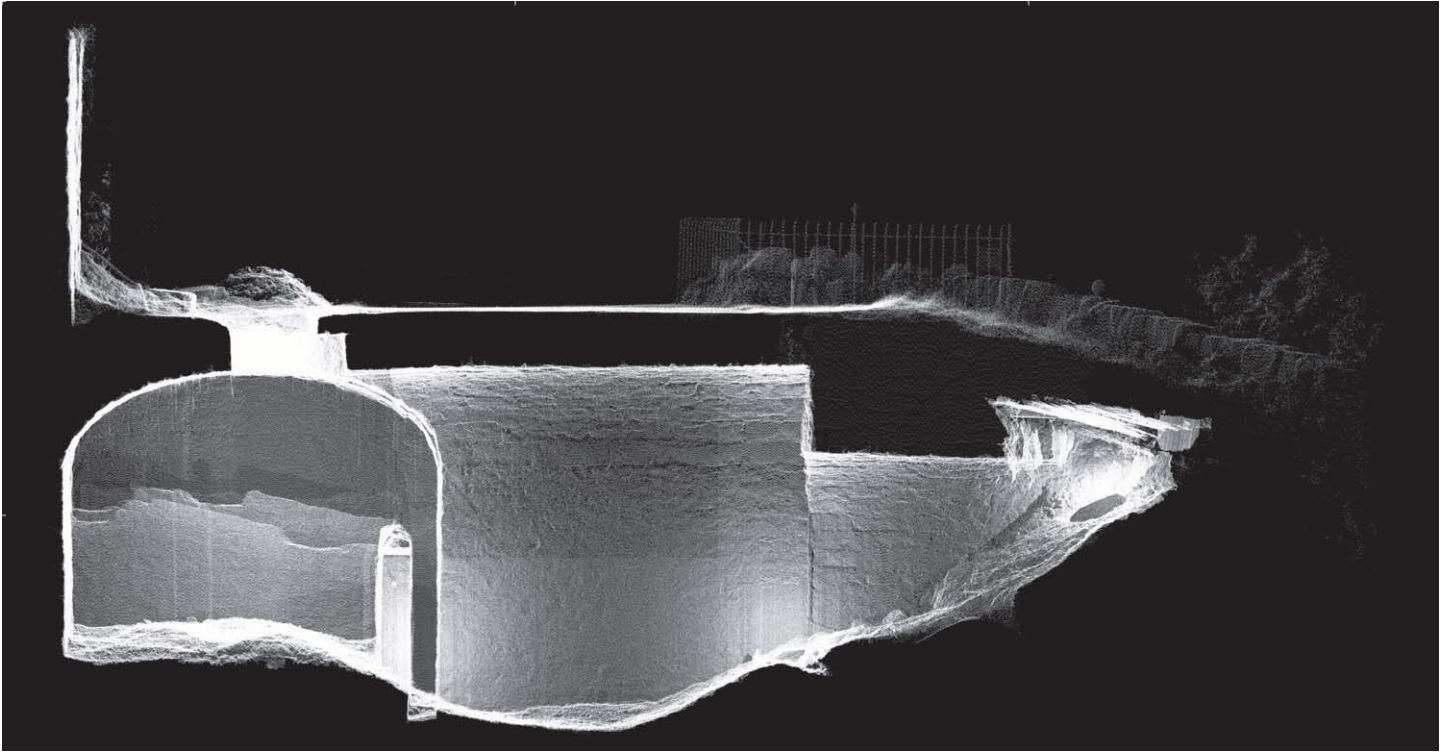


Figure 7: Herman Lyon's Mausoleum, ortho image pointcloud from the east

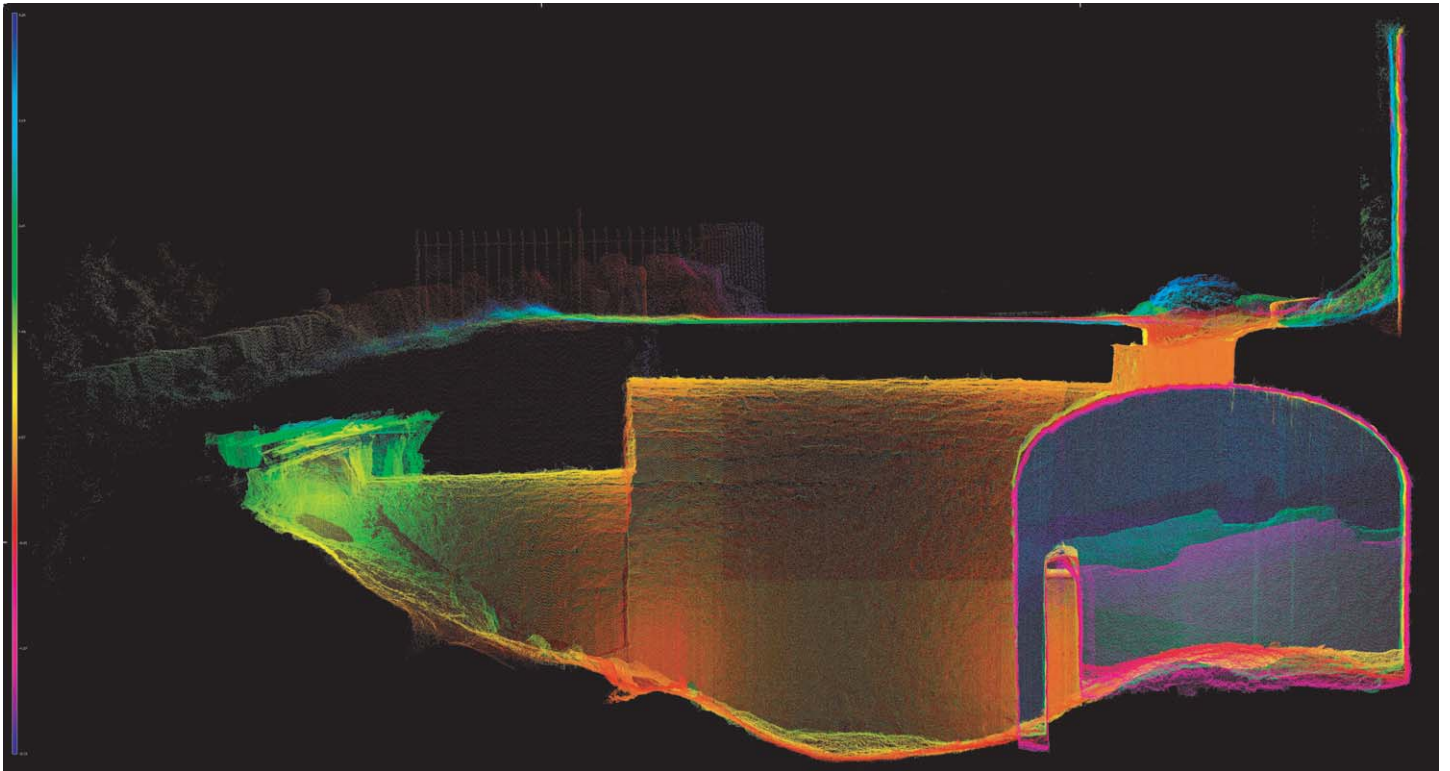


Figure 8: Herman Lyon's Mausoleum, ortho image pointcloud from the west

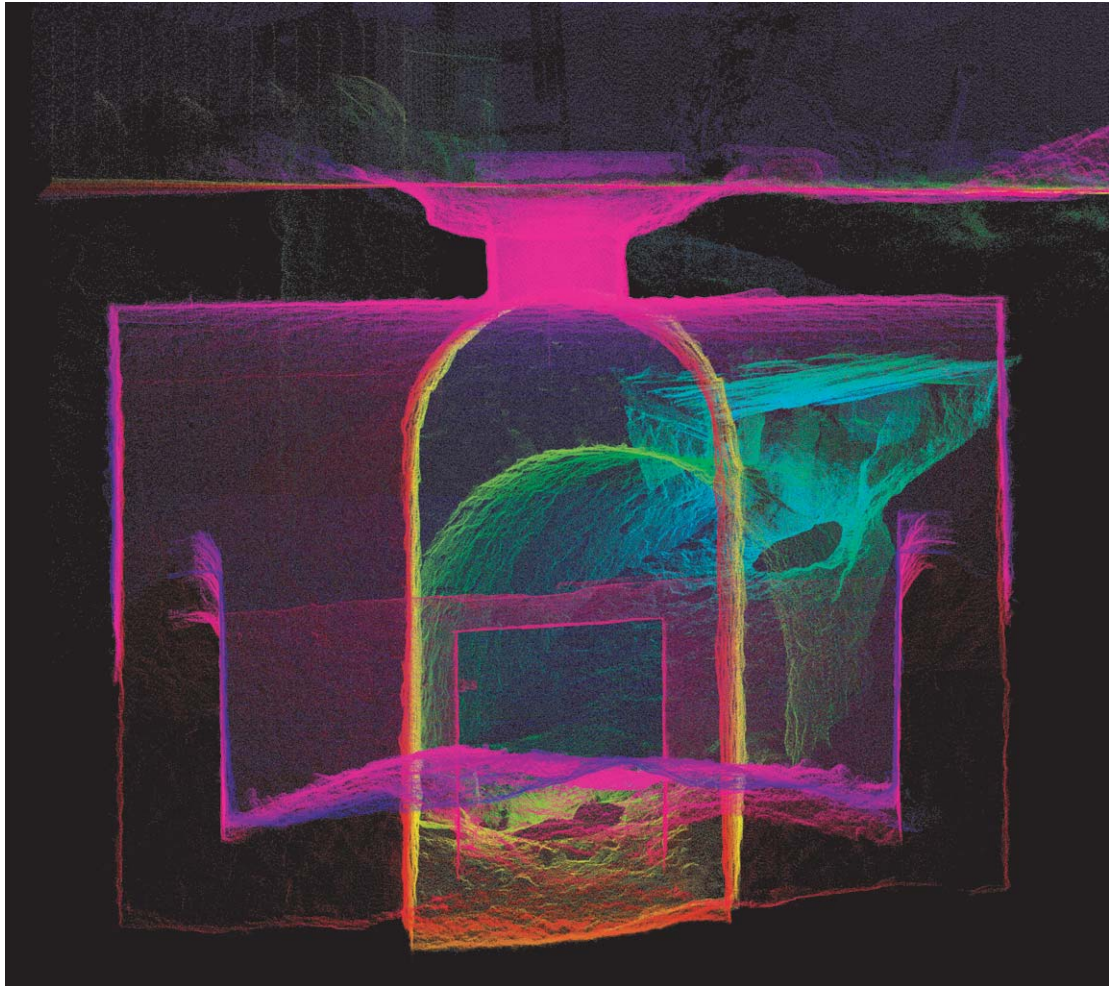


Figure 9: Herman Lyon's Mausoleum, ortho image pointcloud from the south

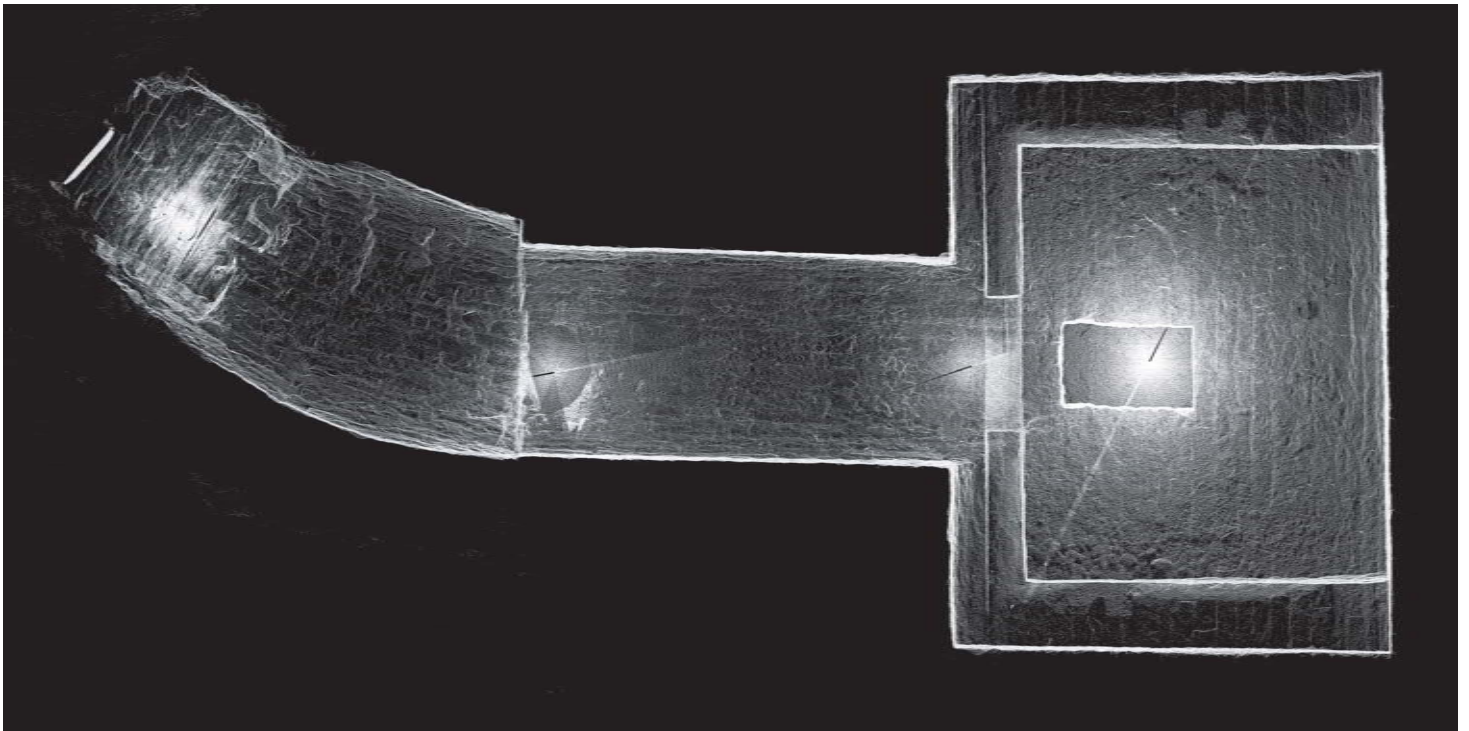


Figure 10: Herman Lyon's Mausoleum, ortho image pointcloud from above

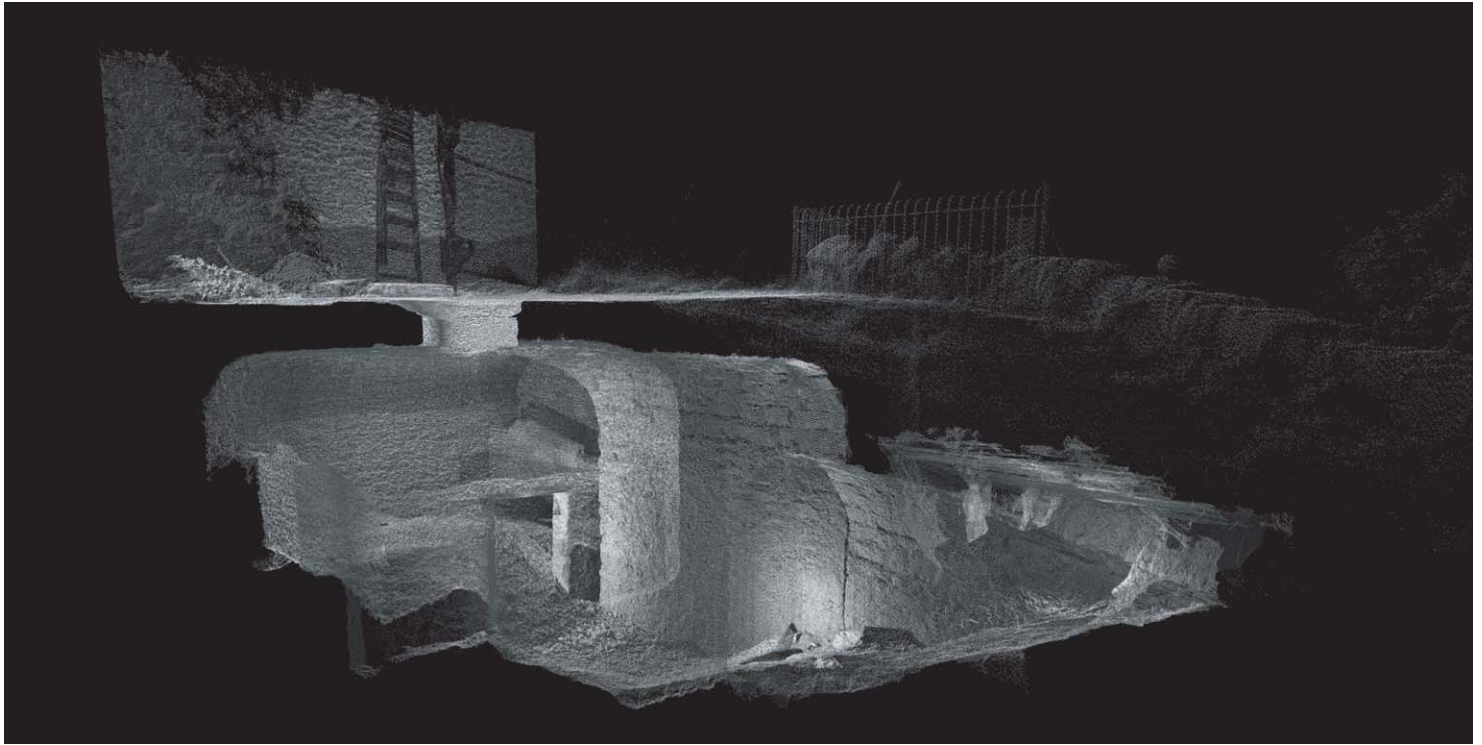


Figure 11: Herman Lyon's Mausoleum, ortho image pointcloud from the north-east

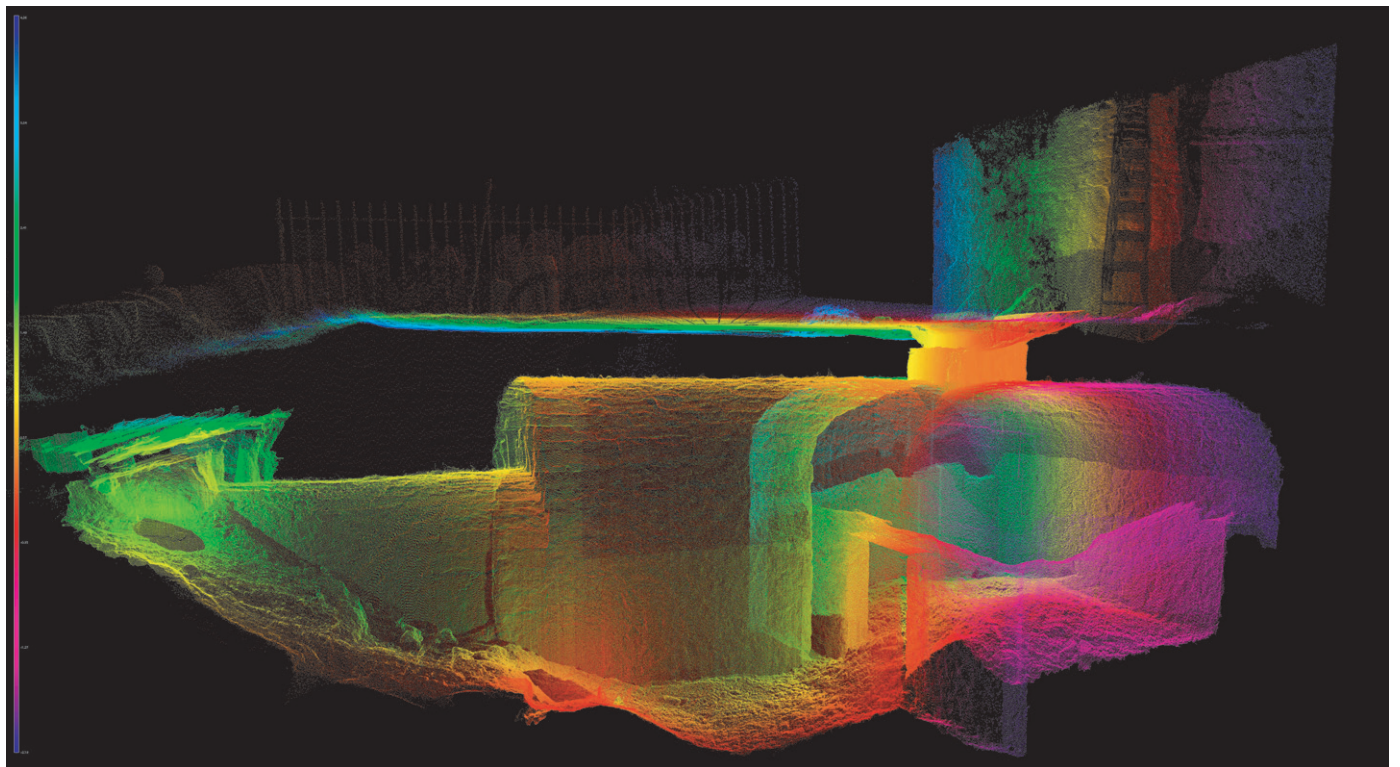


Figure 12: Herman Lyon's Mausoleum, ortho image pointcloud from the NWW



Plate 1: Main chamber, general view of the west wall showing the inner skin wall, from the SEE



Plate 2: Main chamber, general view of the east wall from the west



Plate 3: Main Chamber, general view of the south wall from the north-west



Plate 4: Main Chamber, general view of the north inner skin wall showing the main former gated entrance, from the south-west



Plate 5: Entrance Passage, detail of the former gated entrance, from the north



Plate 6: Former gated entrance, detail of rusted hinge in the east side, from the north-east



Plate 7: Former gated entrance, detail of rusted fitting in the west side, from the north-west



Plate 8: Former gated entrance, detail of rusted iron latch, from the south-east



Plate 9: Entrance Passage, general view from the north



Plate 10: Entrance Passage, general view from the south



Plate 11: Entrance Passage, detail of blocked entrance from the south

## 8 REFERENCES

### 8.1 Bibliography and bibliographical references

Edinburgh Jewish History ud <http://www.ehcong.com/index.php/edinburgh-jewish-history>, Accessed 26<sup>th</sup> August 2013

Levy, A 1959 *The Origins of Scottish Jewry*. Unknown publisher.  
<http://www.jhse.org/book/export/article/16718>, Accessed 26<sup>th</sup> August 2013

### 8.2 Cartographic References

1817 Robert Kirkwood *Plan of the City of Edinburgh*

1852 Ordnance Survey *Edinburgh Sheet 30*

## Appendix 1: Photographic Register

### Black & White Print (Film # 1) & Colour Digital

Frame	Description	Taken From	Date
1 – 14	Unassigned	-	-
15	Detail of iron fixing sitting on the lintel (possible cross bar/latch feature) associated with the previous iron gate within the main entrance on the north side of the main chamber	SSE	26/08/2013
16 – 17	Entrance passage, general view	S	26/08/2013
18 – 19	Entrance passage, general view looking towards main chamber	N	26/08/2013
20 – 21	Entrance passage, detail looking at the blocked entrance	S	26/08/2013
22	Entrance passage, general view looking up towards main entrance	S	26/08/2013
23	Detail of the rusted fixing on the west side of the former gated entrance	SE	26/08/2013
24	Detail of the rusted hinge on the east side of the former gated entrance	SW	26/08/2013
25	Entrance passage, detail of the former gated entrance	N	26/08/2013
26 – 27	Main chamber, detail of the former gated entrance to the north wall	S	26/08/2013
28 – 29	Main chamber, general view of west wall	SEE	26/08/2013
30	Main chamber, detail of the inner skin wall	SWW	26/08/2013
31 - 32	Main chamber, general view of the east wall	SWW	26/08/2013
33	Main chamber, general view of the east wall	SW	26/08/2013
34	Main chamber, general view of the south wall	NW	26/08/2013
35	Main chamber, general view of the south wall	NE	26/08/2013
36	Registration Shot	-	26/08/2013

## Appendix 2: Discovery & Excavation in Scotland (DES) Entry

<b>LOCAL AUTHORITY:</b>	City of Edinburgh Council
<b>PROJECT TITLE/SITE NAME</b>	Herman Lyon's Mausoleum, Calton Hill
<b>PROJECT CODE:</b>	AOC 22509
<b>PARISH:</b>	Edinburgh
<b>NAME OF CONTRIBUTOR:</b>	Diana Sproat
<b>NAME OF ORGANISATION:</b>	AOC Archaeology Group
<b>TYPE(S) OF PROJECT:</b>	Historic Building Recording & Watching Brief
<b>NMRS NO(S):</b>	None
<b>SITE/MONUMENT TYPE(S):</b>	Mausoleum
<b>SIGNIFICANT FINDS:</b>	None
<b>NGR (2 letters, 6 figures)</b>	NT 26184 74210
<b>START DATE (this season)</b>	26 <sup>th</sup> August 2013
<b>END DATE (this season)</b>	26 <sup>th</sup> August 2013
<b>PREVIOUS WORK (incl. DES ref.)</b>	None
<b>MAIN (NARRATIVE) DESCRIPTION:</b> (May include information from other fields)	<p>An historic building survey was undertaken of the former Herman Lyon's Mausoleum on the top of Calton Hill, Edinburgh, prior to its concealment after drainage works on the site. The Mausoleum, which dates from 1795, is thought to be the first Jewish mausoleum/grave site in Edinburgh created by Herman Lyon. It does not appear on any maps bar the First Edition Ordnance Survey map of the 1850s and, although its existence was known, remained covered and generally forgotten for the last 150 years.</p> <p>This survey identified the main character of the chamber with barrel-vaulted roof, the floor covered in a deposit of modern hardcore presumably dumped there during the construction of the adjacent tar mac road.</p>
<b>PROPOSED FUTURE WORK:</b>	None.
<b>CAPTION(S) FOR ILLUSTRS:</b>	None.
<b>SPONSOR OR FUNDING BODY:</b>	City of Edinburgh Council
<b>ADDRESS OF MAIN CONTRIBUTOR:</b>	AOC Archaeology Group, Edgefield Road Industrial Estate, Edgefield Road, Loanhead, Midlothian, EH20 9SY
<b>EMAIL ADDRESS:</b>	edinburgh@aocarchaeology.com
<b>ARCHIVE LOCATION:</b> (intended/deposited)	Archive to be deposited in NMRS



AOC Archaeology Group, Edgefield Industrial Estate, Edgefield Road, Loanhead EH20 9SY  
tel: 0131 440 3593 | fax: 0131 440 3422 | e-mail: admin@aocarchaeology.com

[www.aocarchaeology.com](http://www.aocarchaeology.com)